



Unit 27 The Tait Centre, Dominick Street, Limerick



- ▶ Over 50 units for small business and new enterprises
- ▶ Facilities for meetings
- ▶ Active front reception area with shared services
- ▶ Fully serviced common areas
- ▶ Central location in the heart of Limerick city
- ▶ Internal floor area of 515 sq ft
- ▶ Flexible lease terms available

Shannon Development have a range of industrial, distribution and office property solutions for your business visit us at:
www.ShannonDevelopment.ie/Property

SHANNON DEVELOPMENT SHANNONTOWN CO. CLARE T. +353 (0)61 710229

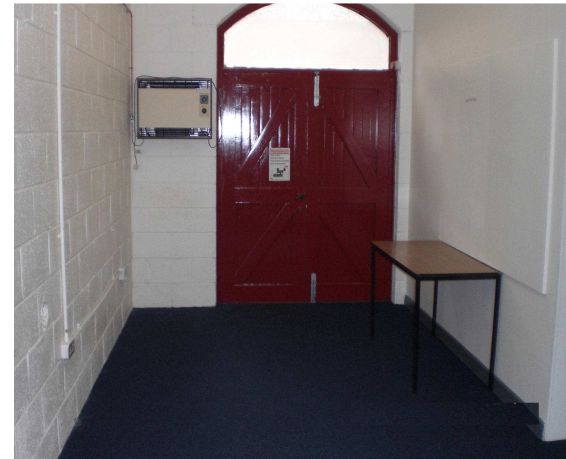
National Technology Park Limerick. T. +353 (0)61 338 177 • Ennis Information Age Park, Ennis. T. +353 (0)65 689 5000

Blir Technology Centre, Blir. T. +353 (0)57 912 4000 • Tipperary Technology Park, Thurles. T. +353 (0)504 293 00 • Kery Technology Park, Tralee. T. +353 (0)66 719 0000



Description:

Developed in the mid 1980s, to promote the development of small indigenous industry and enterprise in Limerick city, the Tait Business Centre is one of the largest business centres of its type in Ireland today. It is located in the old industrial heart of the city, in Dominic Street and offers a total of 54 units ranging in size from c.150 sq. ft. to 2,200 sq.ft. and is an ideal base for new start-up and small enterprises. A variety of shared services and facilities such as meeting rooms, mail/message point, copying and others are available to tenants at the Tait.



Unit 27:

Unit 27 is located on the ground floor of the Tait Centre and extends to a floor area of 515 sq ft. The office can be accessed from the main Tait entrance or from double doors opening onto the rear car park. The office has one internal office and a large open plan area. Services to the unit include alarm, gas heating and ample cabling.

Location:

The centre is located on Dominick Street in the heart of Limerick's commercial district between the railway station and O'Connell street the city's main thoroughfare.



Contact Information:

George O Sullivan

Limerick City Development

Direct Line:

061-402221

Email:

osullivang@shannondevelopment.ie